

The PermaPost® Collection

- Weather Proof
- Insect Proof
- Load Bearing
up to 5,000 lbs.

- Low Maintenance
- Finished White,
Ready to Install
- 25 Year Warranty

Chamfered PermaPost® with Savannah
PermaPorch® Railing and Square Balusters.

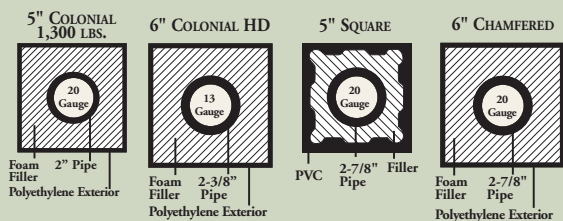
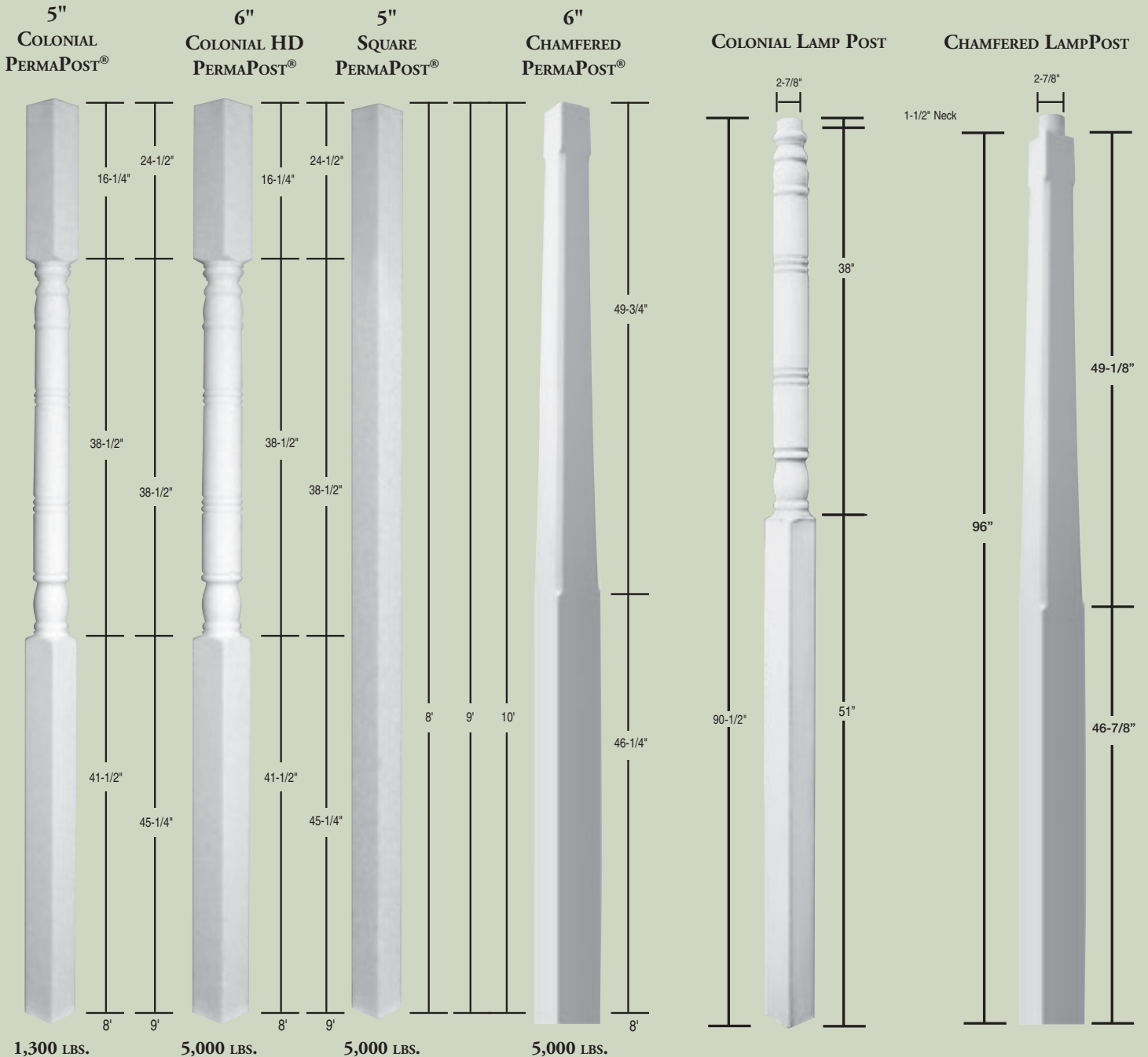


The PermaPost® is made from a super low maintenance polyethylene and is finished white. For a warm and inviting decorative look for your

front porch, choose from either the 5" or 6" Colonial post, the 5" square post, or the new 6" Chamfered post.

PermaPosts®

Perma Lamp Posts



The Perma Lamp Post is an attractive way to light a drive or garden area. The pipe in the center is designed to allow a wire to be easily installed. The 2⁷/₈" pipe fits most outdoor lamp fixtures.

Description

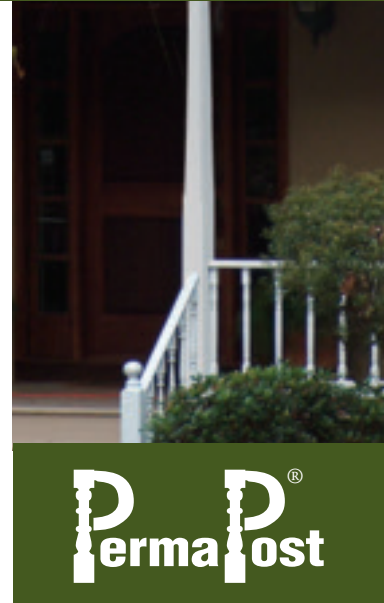
Dimensions are nominal and may vary slightly.

- 5" Colonial PermaPosts® and lamp posts are net 4"
- 6" Colonial PermaPosts® are net 5"

Chamfered PermaPosts® and lamp posts are net 3 1/2" and 5 1/2"

- Square posts are net 4 1/4"
- Lamp posts can accommodate most outdoor lamp fixtures.

The PermaPost® is composed of a polyethylene shell which surrounds a galvanized steel pipe (20 gauge for the 5" post, 13 gauge for the 6" post) and polyurethane foam filler. The 6" PermaPost® is tested to carry a load of up to 5,000 lbs., and the 5" post is rated at 1,300 lbs. (ASTM A500 (40 K.S.I.)



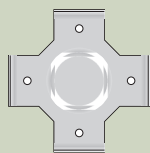
Warranty

HB&G warrants that for twenty-five years the PermaPost® porch or lamp post is free from defects in material and workmanship. Upon proper installation of the post, HB&G will replace any PermaPost® which has failed as a result of defective material or workmanship. In the event of a claim against this warranty, proof of purchase, with date will be required to affect such a claim. Installation cost not included. HB&G gives no other warranty expressed or implied.

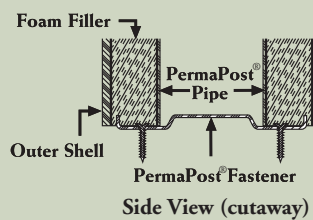
FASTENING SYSTEMS

COLONIAL PERMAPOST®

Two (2) PermaPost® Fasteners are shipped with each colonial post.



Top View of Fastener

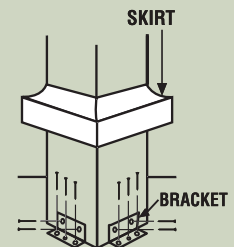


Side View (cutaway)

OPTIONAL

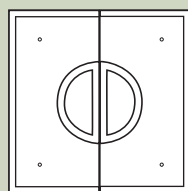
PERMAPOST® FASTENING KITS

Each kit comes complete with skirt, brackets, and TapCon screws for wood or concrete substrates. Available for all PermaPost® styles.

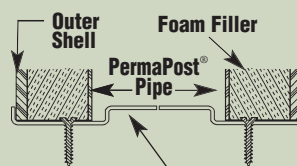


SQUARE PERMAPOST®

Two (2) PermaPost® Fasteners are shipped inside each post.



Top View of Fastener



Side View (cutaway)