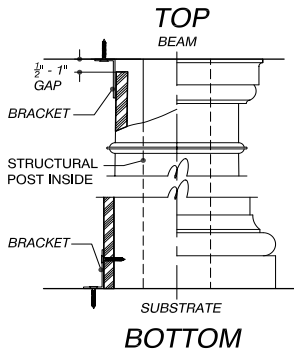


"SPLIT COLUMNS ARE NOT LOAD BEARING."

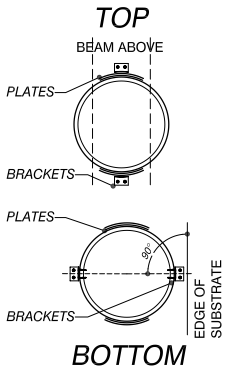
Detail #1



ATTACHMENT NOTE:

Do not fasten top clips to column shaft with screws. Attach to beam, friction fit to top only. Bottom bracket should be attached with included screws to substrate and column.

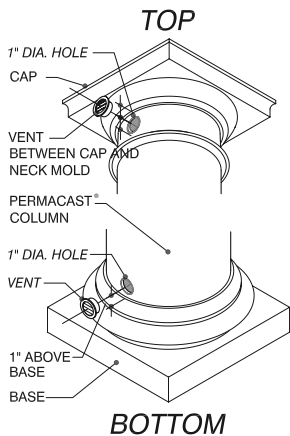
Detail #2



ATTACHMENT NOTE:

Use included tap-cons for substrate attachment and pan head screws for column attachment. Do not fasten top bracket to column.

Detail #3



LOCATION NOTE:

If Ornamental capital is used or not enough space exist between cap and neck mold, locate center of vent 1\"/>

Split Kit Installation Instructions for Round or Square PermaCast® Columns



1. The HB&G Split Kit is shipped inside every factory split PermaCast® column. The kit includes everything needed to install a Round or Square column.



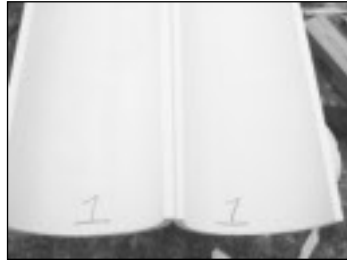
2. Measure opening where column is to be used. Mark column shaft and trim from bottom (see Round or Square PermaCast® installation instructions for cutting tips).



3. Trim column shaft from bottom using carbide tip blade. Fine trim bottom with rasp to assure surface contact. Leave min. 1/2\"/>



4. Factory splits stop short at each end of column. Complete splits on both sides using Carbide tipped blade.



5. If installing more than one column, mark each half with a corresponding number or letter (ie #1, #2, A, B, etc.). If halves are mixed they will not fit together.



6. Prepare surface for adhesive by removing all debris with clean cloth. Apply HB&G adhesive to all connecting surfaces (both sides of each half).



7. Place both halves around support post and secure using straps. Install straps by pulling tight. Place straps every 16\"/>



8. Place aluminum plates across split line at top and bottom of column. Mark and pre-drill holes using 7/64\"/>



9. Screw down one side of aluminum plate and then the other. Plate will bend around round columns. This should be done at top and bottom of both splits.



10. Install included corner/ angle brackets at top and bottom of shaft. See Details #1 & #2 for bracket placement.



11. Apply remaining HB&G adhesive or any non-acetone construction adhesive to both sides and bottom of cap and base. Nail or screw halves together and caulk holes.



12. Use a 1\"/>

After adhesive has fully cured;

1. Cut away straps.
2. Remove excess adhesive with putty knife.
3. Fill any voids with adhesive or automotive body filler.
4. Caulk all joints and holes in cap and base.
5. Caulk joints where column meets cap and base.
6. Sand all joints and patches prior to painting.
7. Refer to ROUND or SQUARE PermaCast® Installation Instructions for surface preparation and painting instructions.

Tips

1. Some kits require joining of two straps to wrap around column.
2. Temporary shims can be used to help align column halves. Place shims under column or straps where needed to assist in alignment.
3. Do not force screws into PermaCast® material. Tightening a screw too tight or forcing a screw into a hole too small can result in breaking the material.
4. If using split column shafts for pilaster, cut each aluminum plate into two pieces and bend to 90 degrees to mount shaft to wall.

WARRANTY IS VOID IF INSTALLATION INSTRUCTIONS ARE NOT FOLLOWED



Phone: (800) 264-4HBG
Fax: (334) 566-4629
www.hbgcolumns.com