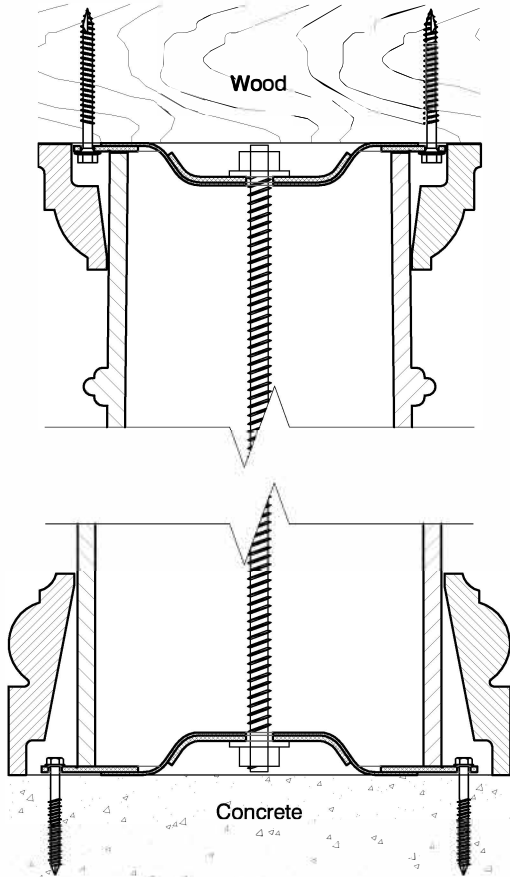
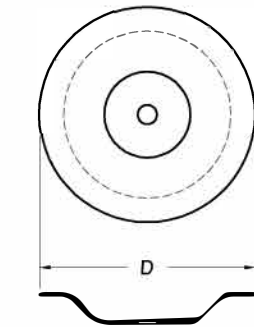


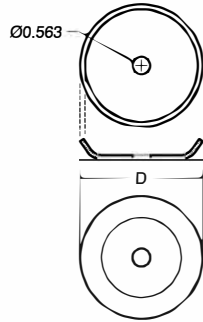
(Note: Cap is split to fit around column and plate.)



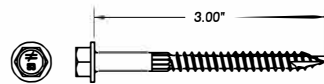
**Assembly Detail 1**



**Steel Dome**

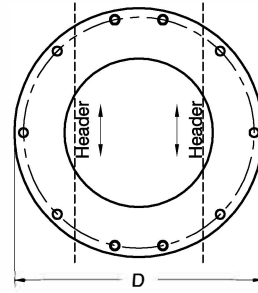


**Dome Washer**

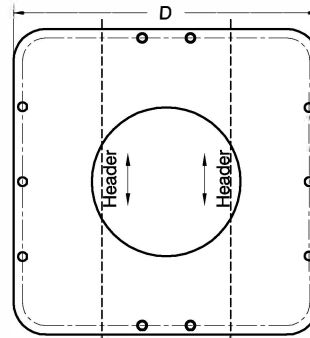


**Hex Washer Head Screw**

Tested with Simpson Strong-Drive® SD screws, 1/4" x 3"



**Round Steel Ring**



**Square Steel Ring**



**Tapcon® Concrete Screw**

3/16" x 2 3/4"

**Installation Kit Instructions:**

1. Follow column installation instructions to trim column to the correct length.
2. Lay column on a pair of sawhorses. Place Tuscan base over the bottom end of the column shaft and push up the shaft out of the way. Split polyurethane cap for this application.
3. Put the stainless steel (ss) all-threaded rods together using the two (2) supplied ss coupling nuts to make up the required length. Insert the all-threaded rod through the interior of column shaft.
4. Assemble top and bottom plates: Slide steel dome and dome washer over steel ring for top and bottom. **(See Assembly Detail 1)**
5. Place plates over all-threaded rod and into column ends and install ss flat washer and ss lock nut at the top end of the column. *(For round tapered columns the outside diameter of the top ring is smaller and this ring is installed at the top of the column.)*
6. Push the all-threaded rod toward the bottom of the column.
7. Install the ss flat washer and ss lock nut at the bottom of the column. Remove any excess portion of the all-threaded rod at this time. *(The rod can be cut using a hack saw or reciprocating saw.)* Tighten lock nut on each end using a socket wrench. **(Note: Ensure that the all-threaded rod does not protrude past the rings on either end of the column.)**
8. Rasp polyurethane base and split cap as needed to remove material to clear top and bottom plates.
9. Stand column upright and follow column installation instructions for setting column plumb in place.\*\* **(Note: Make sure the two holes that are closest to each other are in line with the header - see Steel Ring drawings to the left.)**
10. Once column is in place and plumb, mark and pre-drill holes to secure the Column-Loc™ bottom plate using the ten (10) supplied Tapcon® concrete screws.
11. After the bottom plate is secured, attach the top plate to the header using the four (4) supplied Hex Washer Head screws.
12. Slide base down in place and secure per column installation instructions. Put the two cap halves together using non-acetone construction adhesive and wood screws.

Column-Loc® Installation Kits and Plate Packages							
Column Size & Type	Installation Kit SKU	Plate Package SKU	Steel Ring "D"		Steel Washer "D"	Dome Washer "D"	Uplift Load (max)
			Top (T)	Bottom (B)	Top & Bottom	Top & Bottom	
8" Round Tapered	CLK-8RDT	CLP-8RDT	7.75"	9.125"	6.25"	3.84"	4,566 lbs
8" Round No-Taper	CLK-8RDNT	CLP-8RDNT	9.125"	9.125"	6.25"	3.84"	3,838 lbs
8" Square	CLK-8SQ	CLP-8SQ	9.50"	9.50"	6.25"	3.84"	4,121 lbs
10" Round Tapered	CLK-10RDT	CLP-10RDT	9.625"	11.25"	6.25"	3.84"	3,838 lbs
10" Round No-Taper	CLK-10RDNT	CLP-10RDNT	11.25"	11.25"	6.25"	3.84"	2,503 lbs
10" Square	CLK-10SQ	CLP-10SQ	11.375"	11.375"	6.25"	3.84"	2,368 lbs

Round Tapered Column-Loc® Installation Kit	Round/Square No-Taper Column-Loc® Installation Kit
- (1) Top Plate* - (1) Bottom Plate* - (10) Tapcon Screws - (4) Hex Washer Head Screws - (3) SS Threaded Rod	- (2) SS Coupling Nut - (2) SS Locking Nut - (2) SS Washer - (2) SS Washer - (2) SS Washer SS=Stainless Steel
Round Tapered Column-Loc® Plate Package	Round/Square No-Taper Column-Loc® Plate Package
- (1) Top Plate* - (1) Bottom Plate* - (10) Tapcon Screws - (4) Hex Washer Head Screws	- (2) Bottom Plates* - (10) Tapcon Screws - (4) Hex Washer Head Screws

Round & Square Column Hold-Down System  
**Column-Loc®**



1-800-264-4HBG (4424)  
www.hbgcolumns.com

\*A plate consists of a Steel Ring, Steel Dome, and a Dome Washer.  
\*\*Do not install a flashing cap in this application.