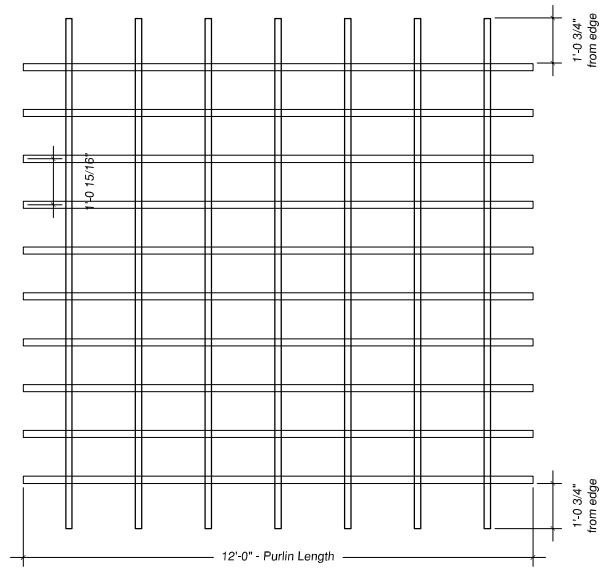
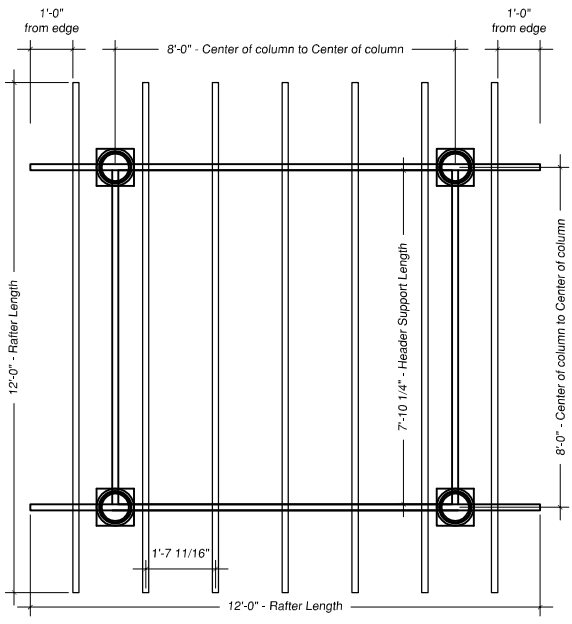
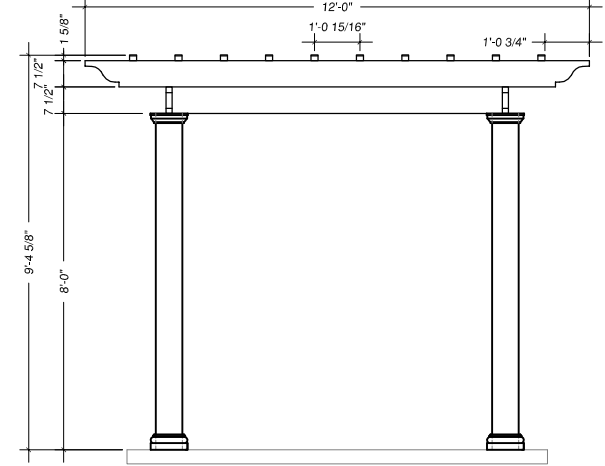
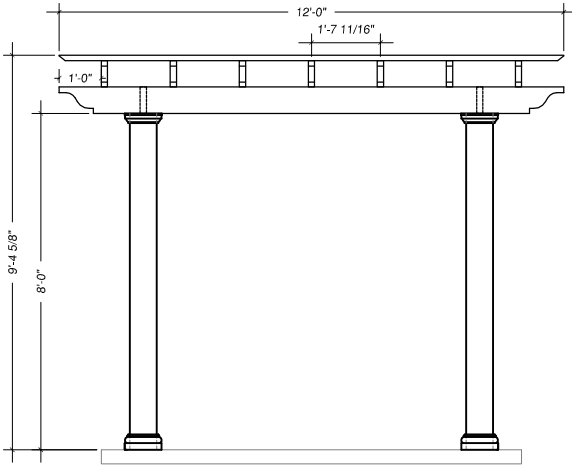
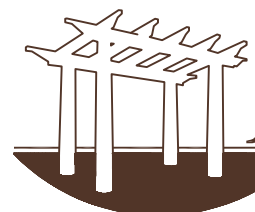


| | | | | | | |
|---|-------------------------|---------------------|--------|----------------------|----------------------|----|
| Stock Number: | 920001 | Pergola Size: | 12'-0" | 12'-0" | Aluminum Angles: | 28 |
| Column Material: | Fiberglass | Columns: | 4 | 8"x8'-0" | Rafter Screws: | 56 |
| | DuraLite | Cap/Base Set: | 4 | Tuscan | Purlin w/ Decorative | 10 |
| Pergola Material: | Fiberglass | Steel Threaded Rod: | 4 | | Ends: | |
| Notes: Screws for rafter and purlin installation are stainless steel. All installation hardware inside the columns is galvanized steel. | Aluminum Anchor Plates: | 4 | | Purlin Size: | 2"x2"x12'-0" | |
| | Column Hardware Sets: | 4 | | Purlin Screws: | 70 | |
| | Rafter/Header Support | Spartan | | Header Support: | 2"x8"x7'-10 1/4" | |
| | Tail Style: | | | Header Support Qty: | 2 | |
| | Rafter Size: | 2"x8"x12'-0" | | Rafter Support Size: | 2"x8"x12'-0" | |
| | Rafter Qty: | 7 | | Rafter Support Qty: | 2 | |



Rafters & Rafter Supports

Rafters & Purlins



ARBORSDIRECT™

12'-0"x12'-0" Standard Pergola

1015 Brundidge Blvd.

P.O. Box 589

Troy, Alabama 36081

1.800.930.7495

Fax 334.566.4629

www.arborsdirect.com